



AIA  
Miami

# 2019 DESIGN AWARDS GALA

DESIGN



FASHION



CULTURE



JAZZ



WELCOME!

A vertical graphic border on the left side of the page. It features a dark blue background with golden musical notes, a purple treble clef, and silhouettes of musical instruments like a trumpet and a saxophone. The design is vibrant and artistic.

# DAPHNE GURRI, AIA





AIA  
Miami

# 2019 DESIGN AWARDS GALA

DESIGN



FASHION



CULTURE



JAZZ

GALA SPONSORS

LOUIS ARMSTRONG DIAMOND SPONSOR



ELLA FITZGERALD PLATINUM



RAY CHARLES GOLD



DIZZY GILLESPIE SILVER



DUKE ELLINGTON BRONZE



IN-KIND SPONSORS



# ANNUAL PARTNERS



A vertical graphic border on the left side of the page. It features a dark blue background with various musical symbols and instruments in gold, purple, and pink. From top to bottom, it includes a treble clef, a saxophone, a trumpet, a double bass, a drum set, and a silhouette of a musician playing a saxophone.

# GEORGE NEARY



A vertical collage of musical instruments and symbols in shades of blue, purple, and gold. It includes a trumpet, a saxophone, a double bass, a drum set, and a treble clef. The background is dark blue with small white dots.

GIA ZAPATTINI, AIA





NATI SOTO, FAIA





WILLIAM J. BATES,  
FAIA





2019 & 2020  
AIA MIAMI LEADERSHIP



# SCHOLARSHIP PRESENTATIONS



# STUDENTS OF THE YEAR



TORI COHEN  
University of Miami



A vertical collage of musical instruments and symbols in shades of blue, purple, and gold, including a trumpet, a saxophone, a treble clef, and a drummer.

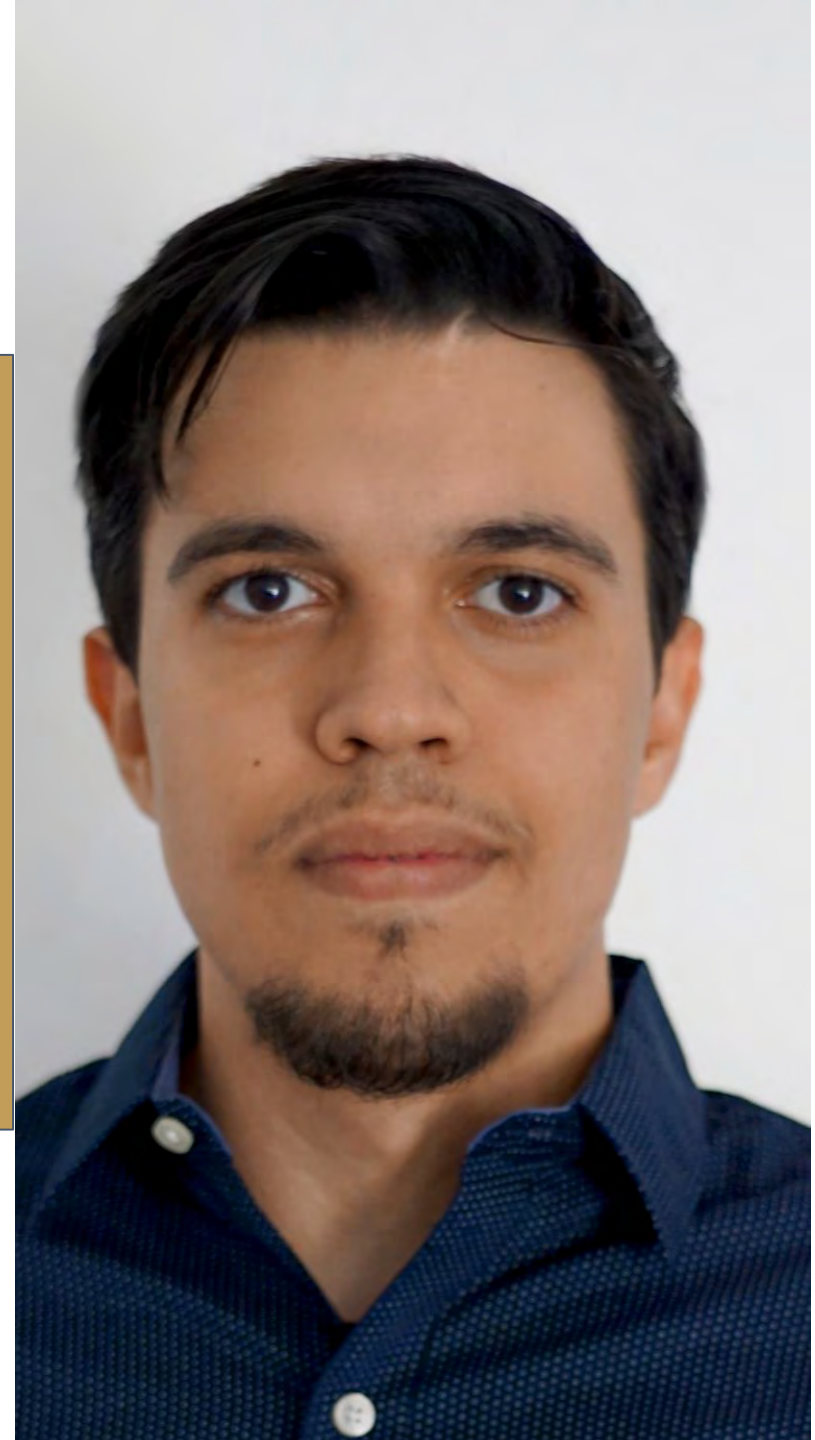
PATRICIA PONCE  
Florida International  
University





# RAFAEL CARDERO

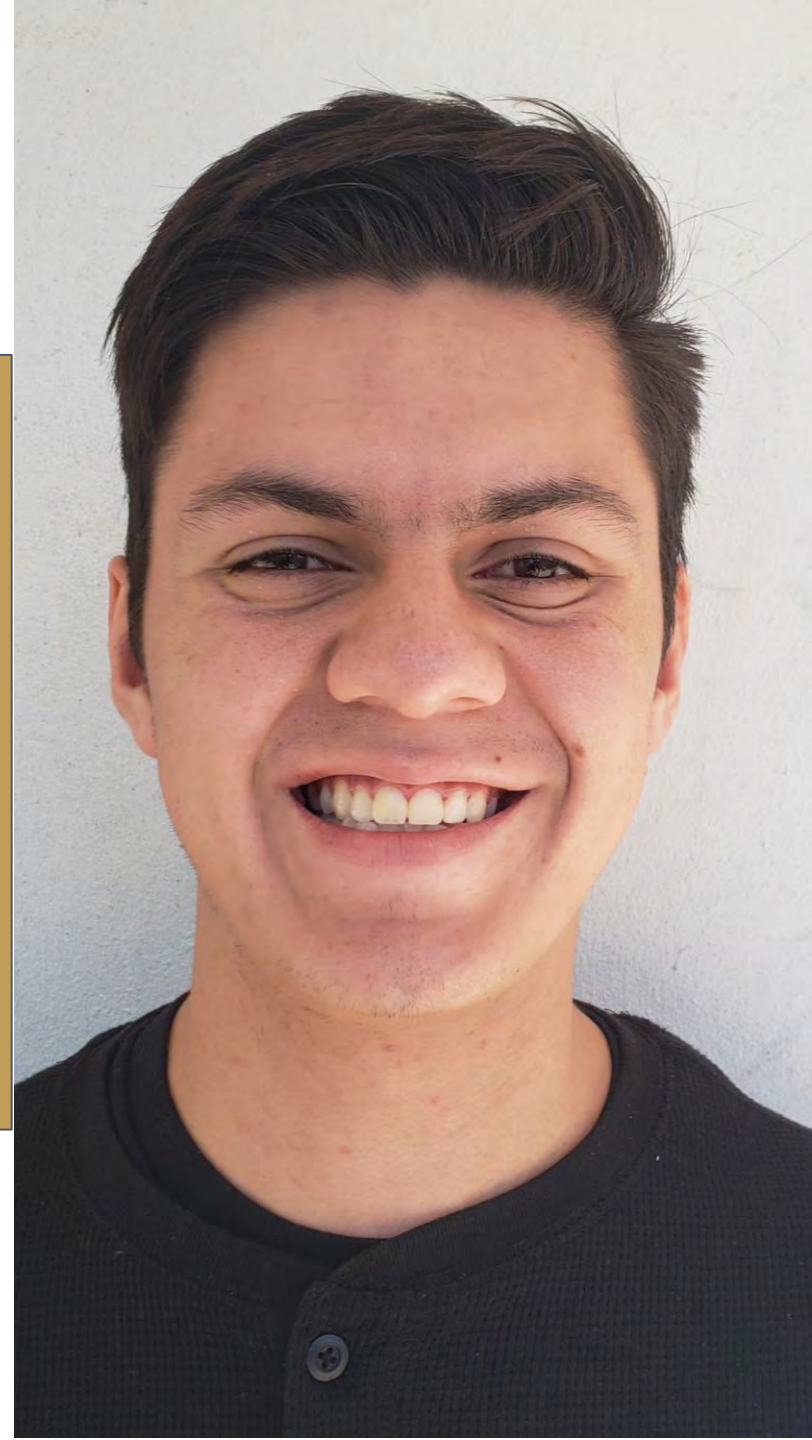
Miami Dade College





CARLOS CEPEDA

Design & Architecture  
Senior High





# BAM SCHOLARSHIP RECIPIENT



# BERNICE THELUSMA





# PRESIDENT'S AWARD

Neyda Otero, AIA





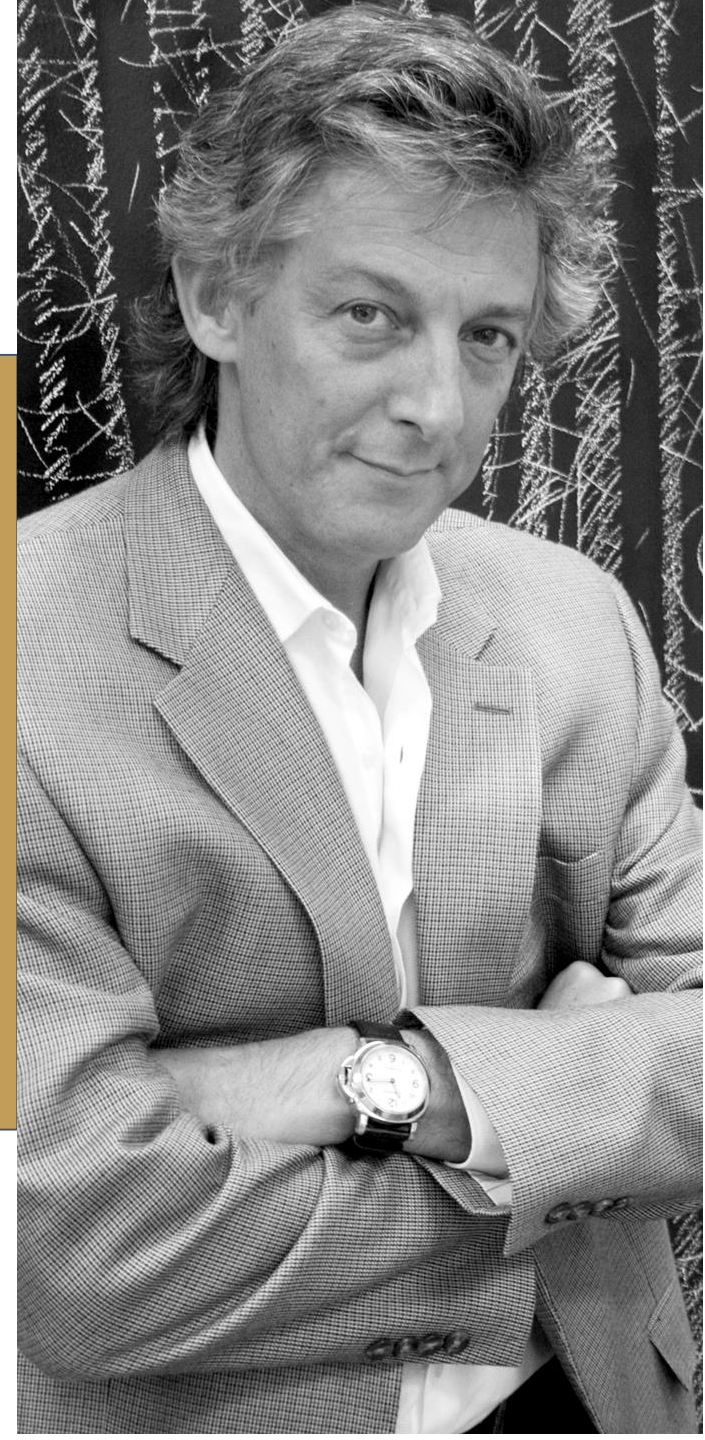
# DESIGN AWARDS



# JURY AIA HOUSTON

A vertical graphic on the left side of the slide. It features a dark blue background with golden stars and musical symbols. From top to bottom, there is a purple treble clef, a golden trumpet, a purple bass clef, and a golden silhouette of a person playing a drum set.

FERNANDO L.  
BRAVE, FAIA



A vertical collage on the left side of the image featuring various musical instruments and symbols. It includes a trumpet, a saxophone, a double bass, a drum set, and a treble clef, all rendered in a stylized, colorful manner against a dark blue background with white speckles.

DONNA KACMAR,  
FAIA





# BRIAN MALARKEY, FAIA





Honor Award of Excellence  
RESIDENTIAL  
ARCHITECTURE

# [STRANG] River's Reach







***“...appreciate the contextual reference to historical architectural precedents, soft bend of the volume reflective of the waterfront it hovers above, lifting of private realm provides views from interior and exterior spaces as well as shades the outdoor living space below, like the interplay of voids of exterior balconies on second floor - create a nice rhythm with vertical wood fins, balance of interior and exterior living”***



# RENOVATION/ RESTORATION

# KOBI KARP ARCHITECTURE

## Four Seasons at The Surf Club







***“...we are glad the owner saved the beautiful murals and interior surfaces of the 1920's surf club, new lighting and furnishing complement the richness of the original interior.”***



Merit Award of Excellence  
INTERIOR  
ARCHITECTURE

# PERKINS + WILL

## Nicklaus Children's Hospital Advanced Pediatric Care Pavilion Lobby







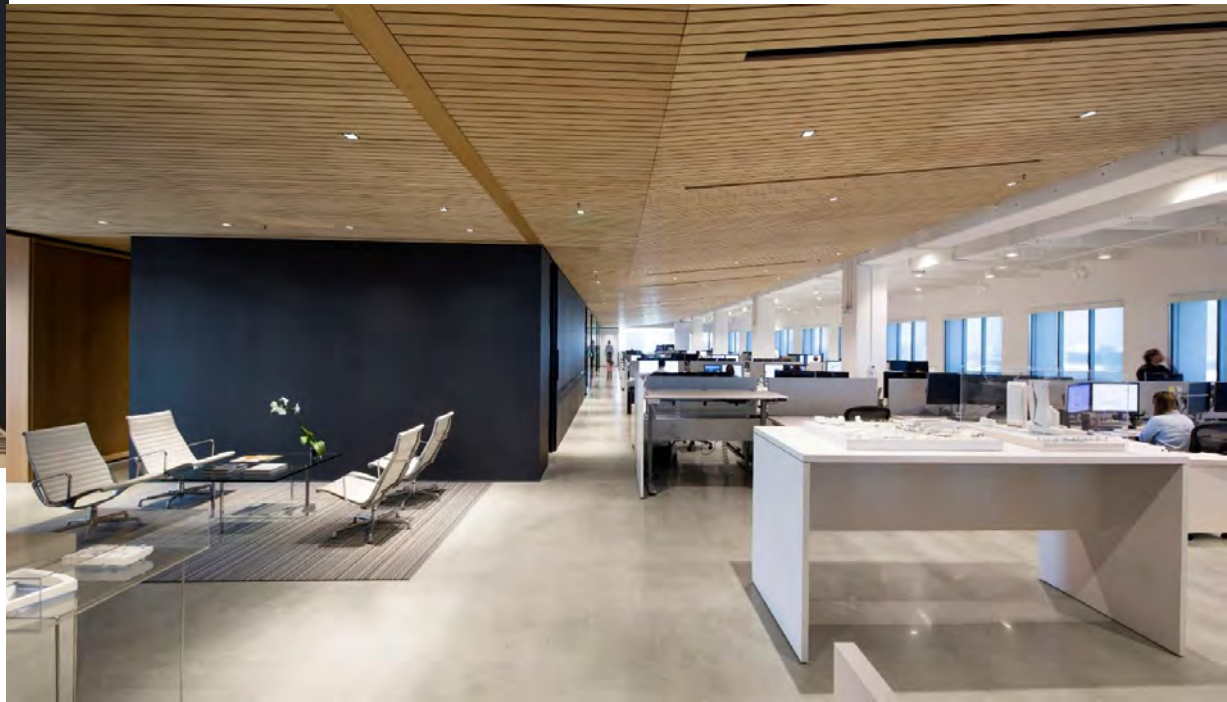
***“...appreciate the refined material palette and lighting details for this important building type, refined playfulness.”***



Honor Award of Excellence  
INTERIOR  
ARCHITECTURE

# PERKINS + WILL

## Perkins + Will Miami Studio







***“...we all want to work here, we like the sectional hierarchy, timeless quality of the space - this will look still fresh in 10 years, we love the attention given to areas of respite + support spaces, the varying light levels throughout, bright office spaces contrast with darker break out and circulation spaces.”***





Honor Award of Excellence  
INTERIOR  
ARCHITECTURE

# YNL ARCHITECTS

## Ichimi Ramen - Miami







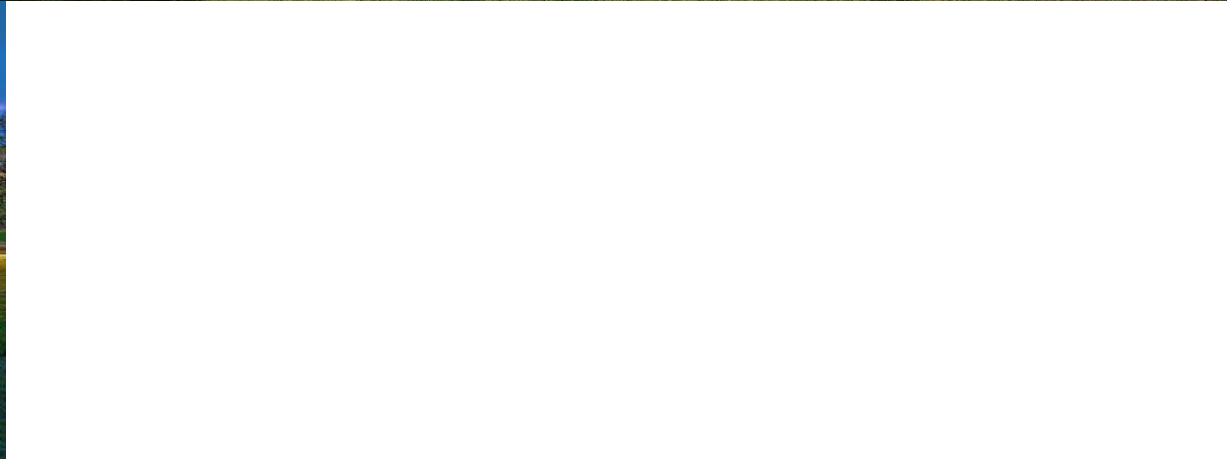
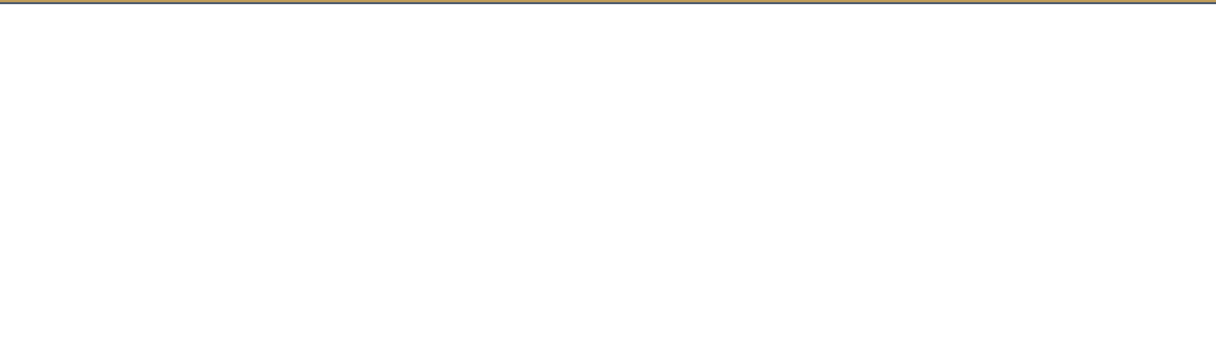
***“...nice use of few materials, well composed, excellent approach to lighting - indirect lighting with custom pendants in a subdued setting, play of surfaces and textures might even help with acoustic environment, both modern and connected to traditional food culture, the jury would have liked to have a drink at this bar at the end of our deliberations.”***



Honor Award of Excellence  
ARCHITECTURE  
Less than 50,000 SF

# ARQUITECTONICA

## University of Miami SOA Thomas P Murphy Design Studio Building







***“...simple unifying gestural roof, allows the roof to do many things: extends to form entry + make a porch, interior activity becomes the focal point and part of the design palette.”***



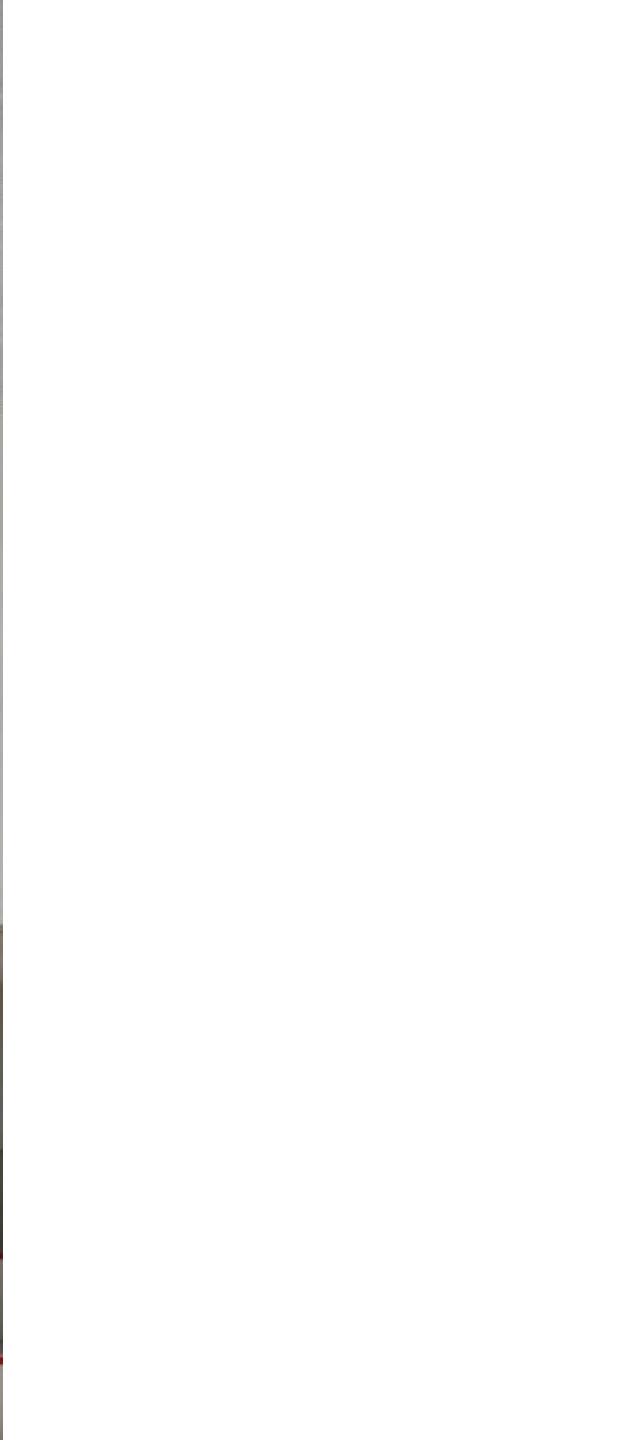


Honor Award of Excellence  
ARCHITECTURE  
Less than 50,000 SF

# CHANDLER & ASSOCIATES ARCHITECT

## Warehouse Complex







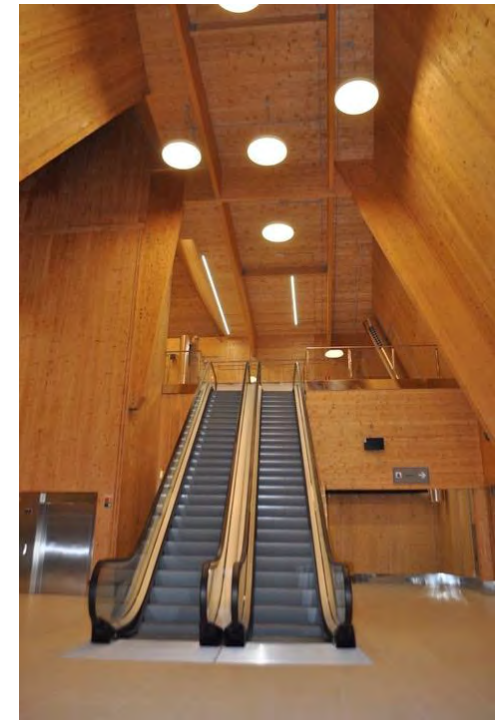
***“...small well-thought out moves create an interesting composition, allow for play of light and shadow to complement the well-proportioned volumes and planes, care was taken with vehicle + pedestrian transportation and light fenestration patterns.”***

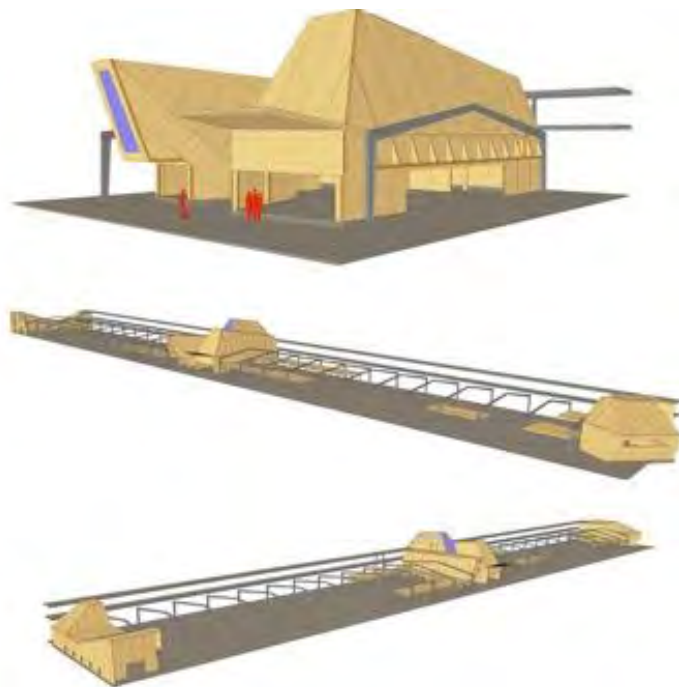


Merit Award of Excellence  
ARCHITECTURE  
Greater than 50,000 SF

# Berenblum Busch Architecture Tenerife Cruise Terminal







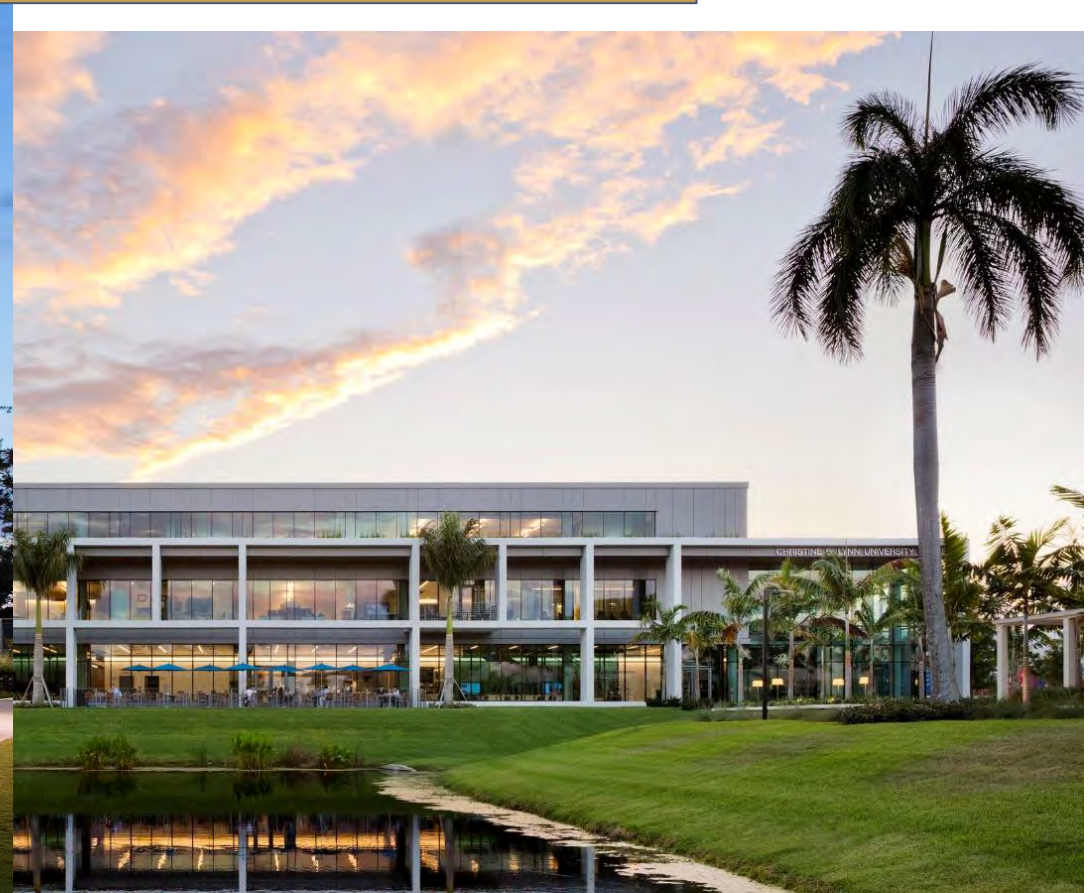
***“...bright insertions bring jolt of color + energy into rather banal building typology, appreciate the adaptive reuse of existing steel warehouse, exploration new timber technology, celebration of travel experience.”***



Honor Award of Excellence  
ARCHITECTURE  
Greater than 50,000 SF

GENSLER

# Christine E. Lynn University Student Center







***“...best of the bunch of what an outsider might understand as Miami style: solar veil, horizontal elements, integration of exterior and interior space, nice interior street, consistent interior resolution, both casual and refined, showed design restraint overall.”***





# Merit Award of Excellence

## DIVINE DETAIL

# SALADINO DESIGN STUDIOS

## SuViche Doral







***“...space defined by the hand-woven macramé rope mural that becomes the banquette canopy, capped of with woven surface of chairs we all want to work here, we like the sectional hierarchy timeless quality of the space, this will look still fresh in 10 years.”***



# Merit Award of Excellence UNBUILT PROJECT

# MOSS ARCHITECTURE & DESIGN GROUP

## Helsinki Central Library







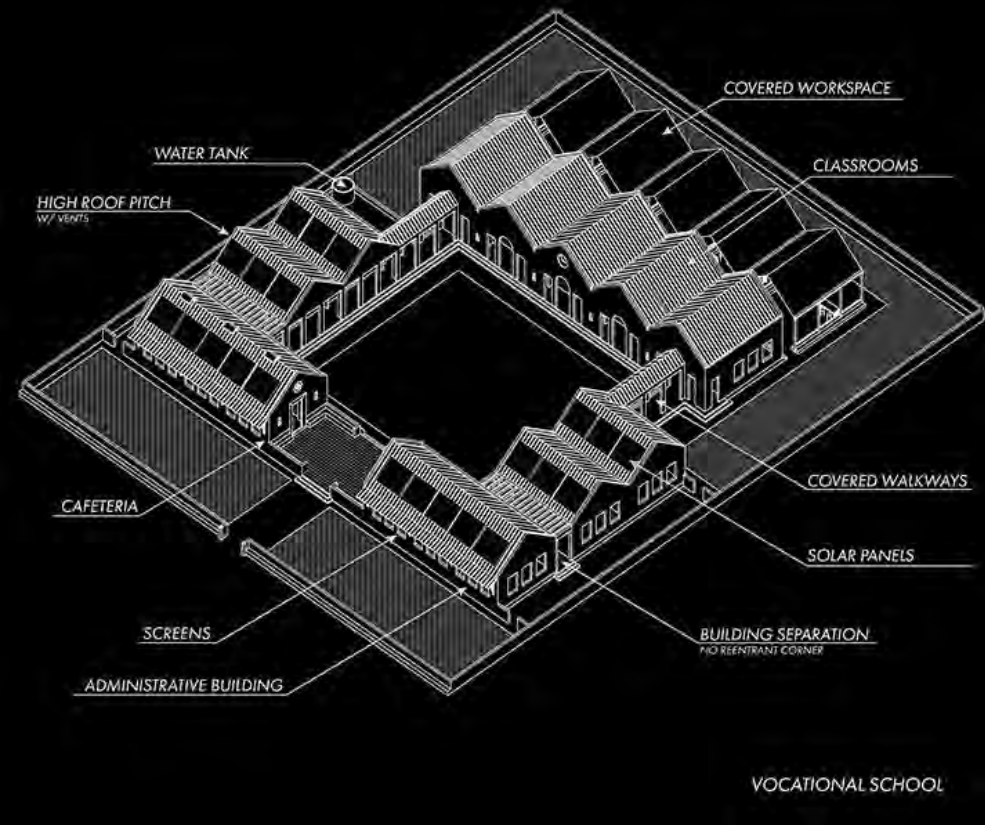
“...overall parti is strong, is clear in both plan and section, appreciate the clear reference to nature, diagrams translate well into the building.”

# STEVEN FETT ARCHITECTURE

## Luly Vocational School







***“...love the drawings and beautiful model, support the project's aspirational goals, commend the utilization of folk art traditions to represent the project make it easy to understand in its context.”***





# Honor Award of Excellence UNBUILT PROJECT

# GENSLER

## 545wyn







***“...playful treatment of horizontal surfaces in garage connects to the vibrant artistic context, incorporation of street art blends the street space into the building space, parking is not hidden or apologized for but celebrated and incorporated into the whole, speculative office buildings are difficult but this sets itself apart by having a design soul and being a quiet neighbor visually, allowing the occupants to transform and active the spaces.”***





# Honor Award of Excellence UNBUILT PROJECT

# KZ ARCHITECTURE

## Spirited Bamboo







***“...simple forms capped with expressive protective roof, assembled into a self-sustaining landscape, photographs and diagrams of the construction process bringing clarity to the constructability of the proposed project, thoughtful from level of detail to system scale, clearly shows how it will improve the lives of the occupants.”***



1. Bamboo planting in the rear of the site provides a wind-breaking buffer as well as bamboo supply for future dwellings.

2. Cultivation of fruits and vegetables will not only sustain the family within the home but may provide enterprising opportunities for the community.

3. With the use of cisterns water will be captured, filtered and retained for consumption.

4. Solar energy provides independence from an unreliable electrical grid, reduce costs, and educates about green living.

5. Opportunities for a sense of individuality and ownership include the color of the exterior paint, the patterns in the bamboo shutters and doors, and the expansions into the open porch.

6. Gravel paths connect the dwellings in a community and facilitate rain water management.



# Merit Award of Excellence

## URBAN DESIGN

# SHULMAN + ASSOCIATES

## Pink Clouds





MIAMI DESIGN DISTRICT

SCULPTURE  
PARK

MUSEUM GARAGE  
PLAZA

PARADISE PLAZA

JADE ALLEY

PASEO PONTI

NE 1ST AVE

FLOATSAM  
& JETSAM

PALM COURT

NE 38TH ST

SITE

I-195



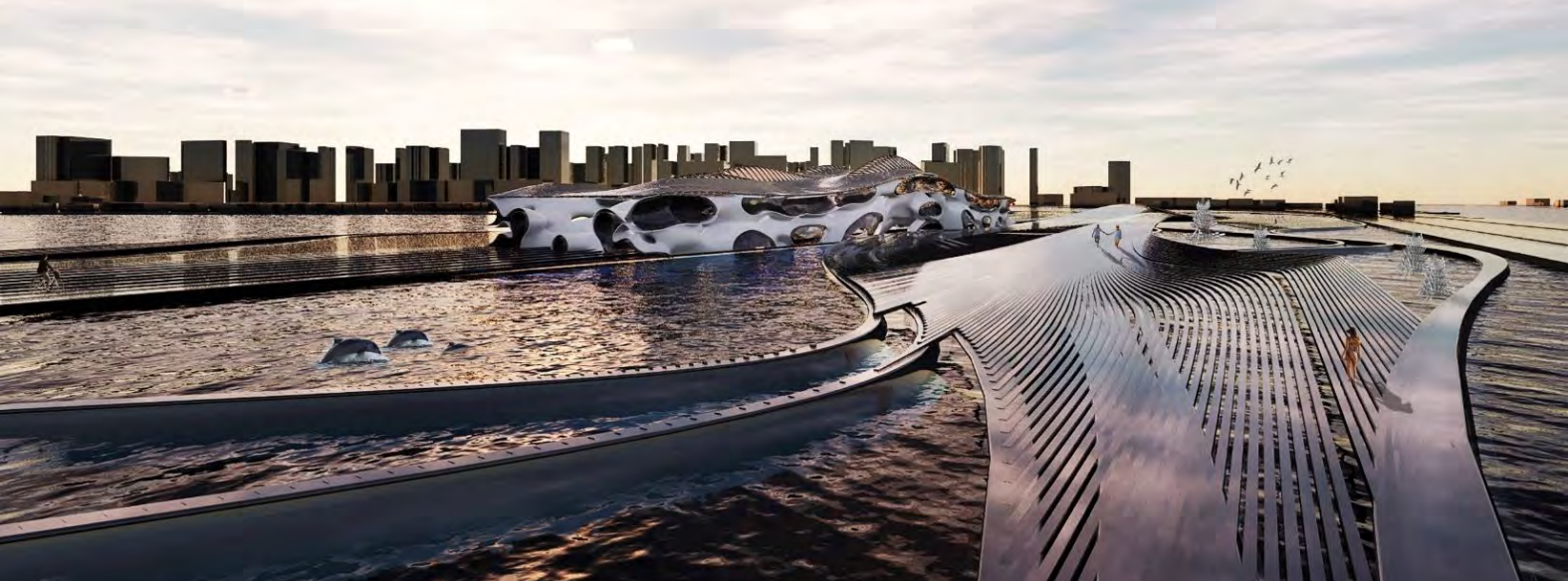
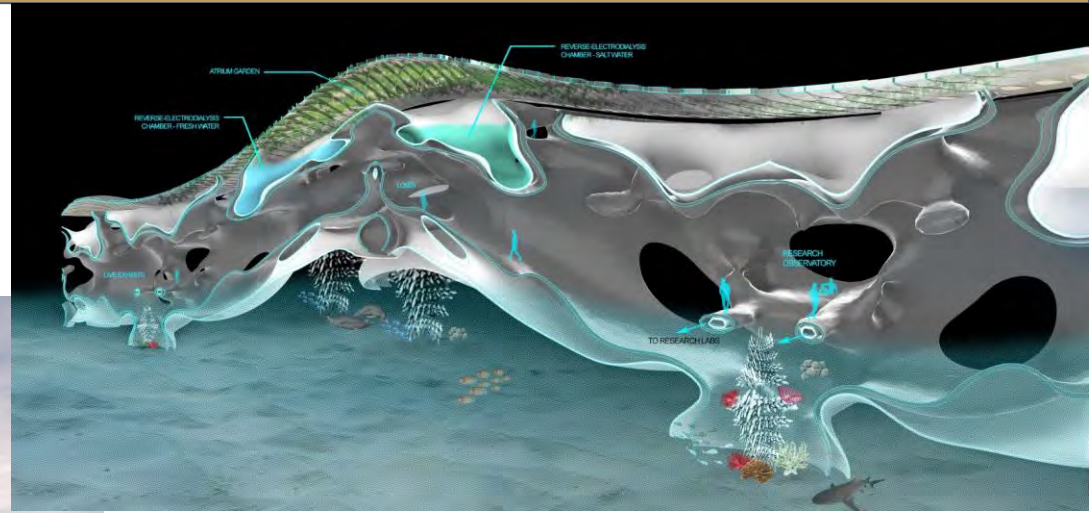
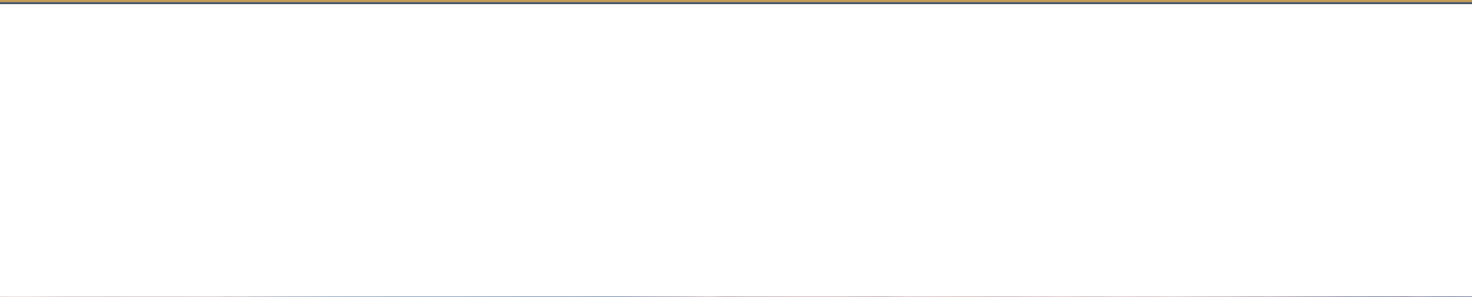
***“...playful, fun respite, commendable to spend private resources and extend private space into the public realm, limited materials palette!”***

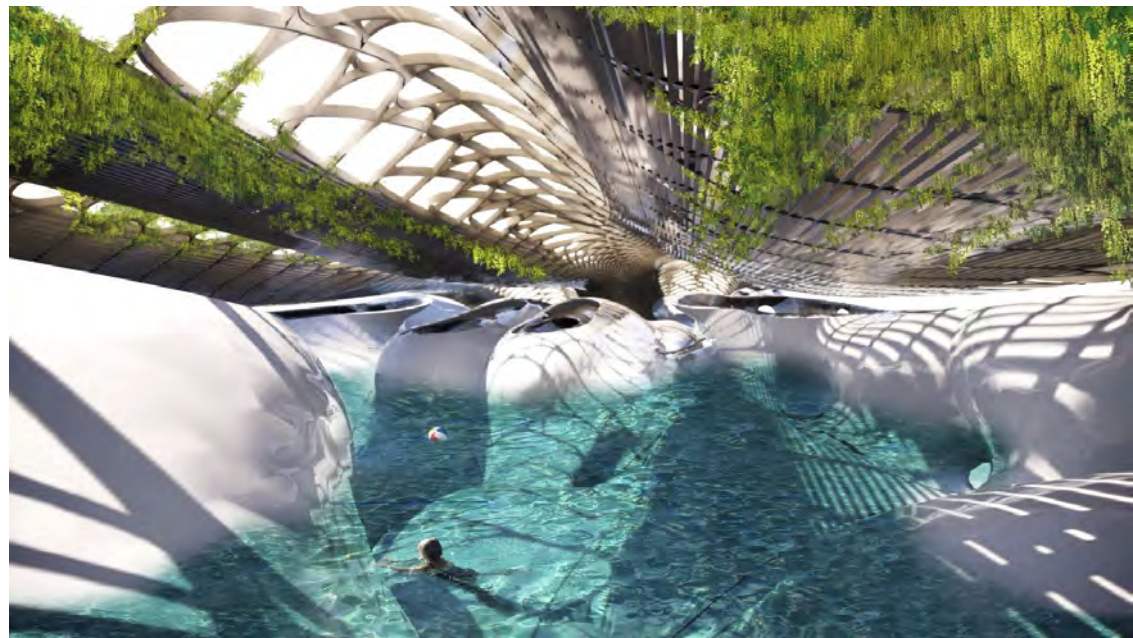


# MERIT AWARD STUDENT DESIGN

# KEVIN DI NARDO, FIU

## Halobiont Leviathan: Miami Dade Oceanic Center







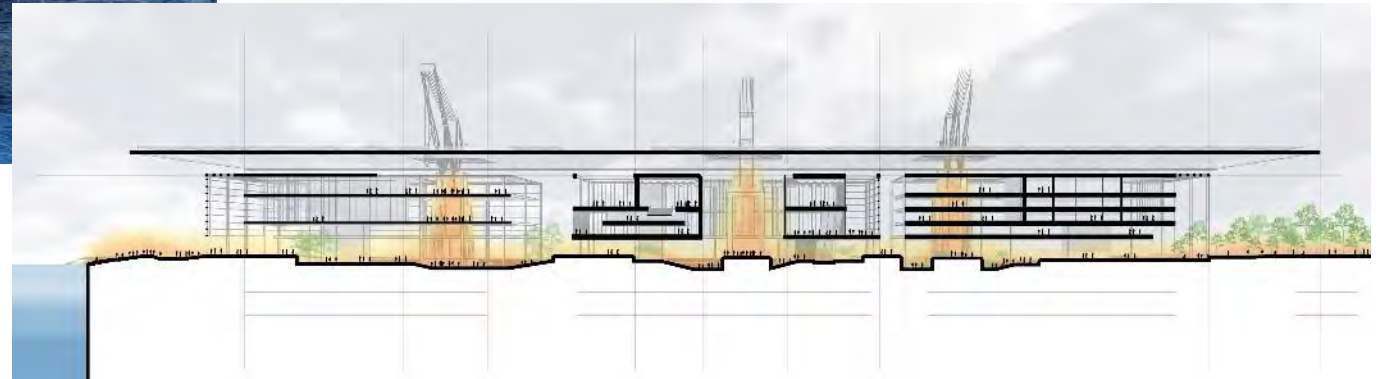
***“...evocative imagery and spatial exploration.”***

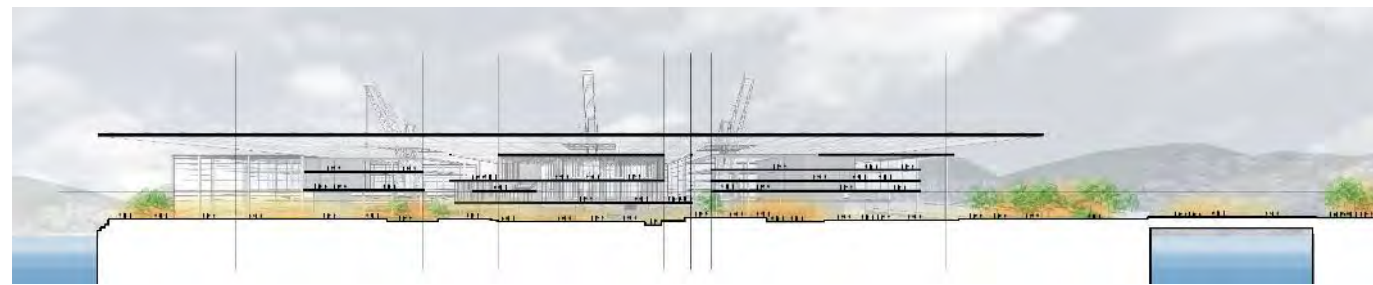


# HONOR AWARD STUDENT DESIGN

# RAMSES TERRERO, FIU

## The Floating District



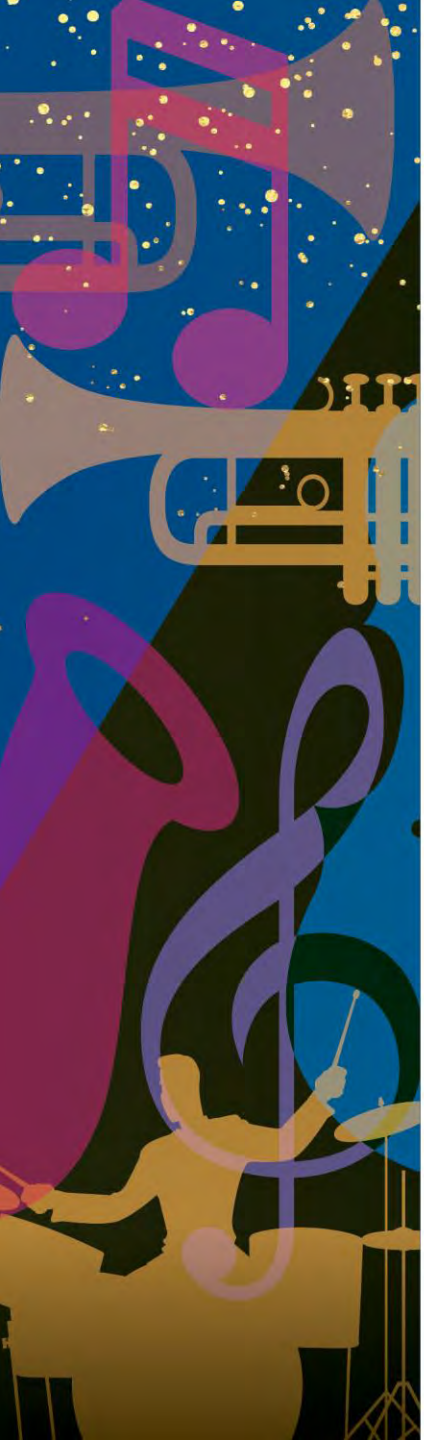




***“...clear and clean presentation, nice section drawings..., well thought out project and can imagine it being built, we understand the reference for the roof support and might have preferred a more abstracted form.”***

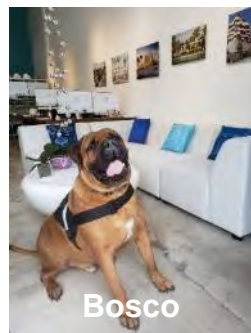
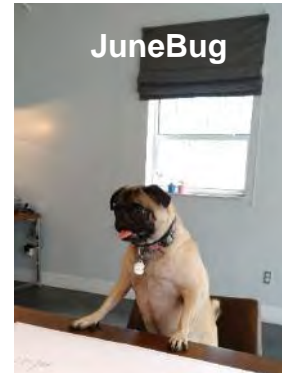


FIRM OF THE YEAR  
Kobi Karp  
Architecture & Interior Design





SMALL FIRM  
OF THE YEAR  
Mc+G Design Studio



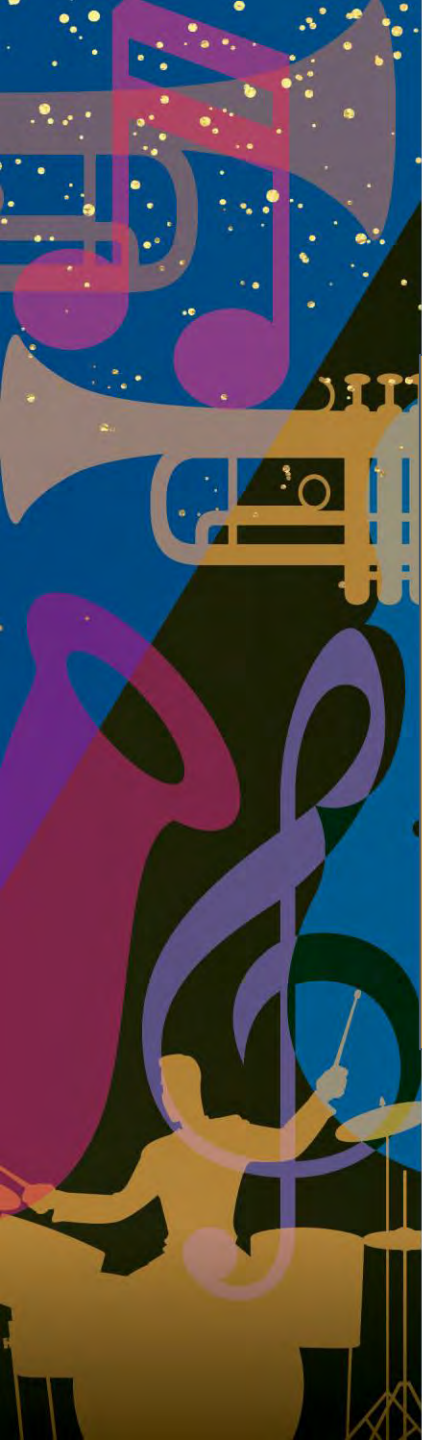


# HONOR AWARDS



ARCHITECT  
OF THE YEAR  
CRAIG AQUART, AIA



A vertical decorative banner on the left side of the image. It features a dark blue background with golden stars and musical motifs. From top to bottom, it includes a purple treble clef, a golden trumpet, a purple saxophone, and a golden silhouette of a drummer. 

SUSTAINABLE DESIGN  
ARCHITECT OF THE YEAR  
DAVID HARPER, FAIA



A vertical collage on the left side of the image featuring various musical instruments and symbols in shades of blue, purple, and gold. It includes a saxophone, a trumpet, a double bass, a drum set, and a treble clef.

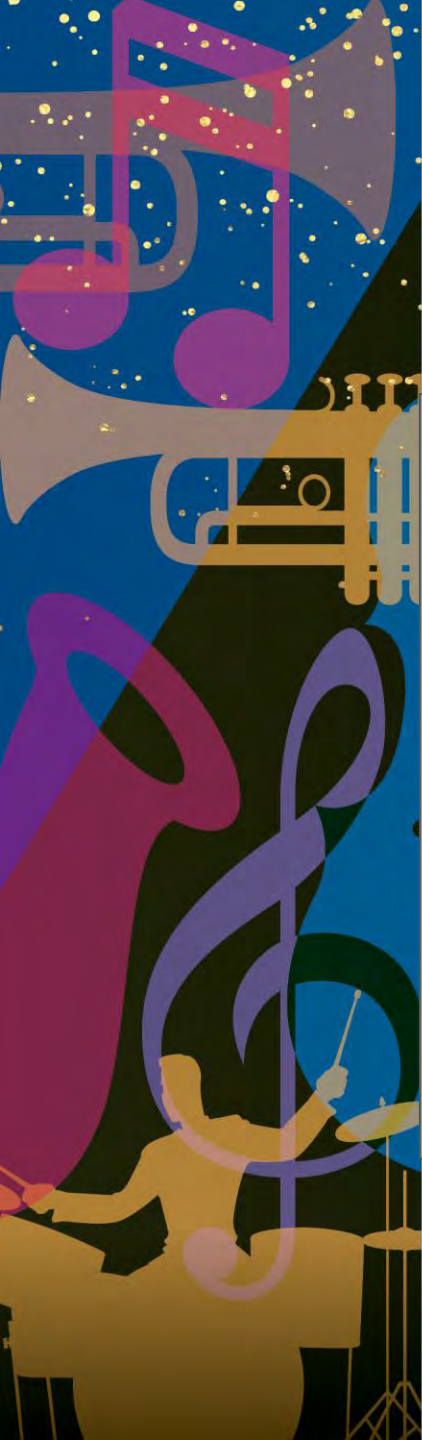
YOUNG ARCHITECT  
OF THE YEAR  
GLENDA PUENTE, AIA





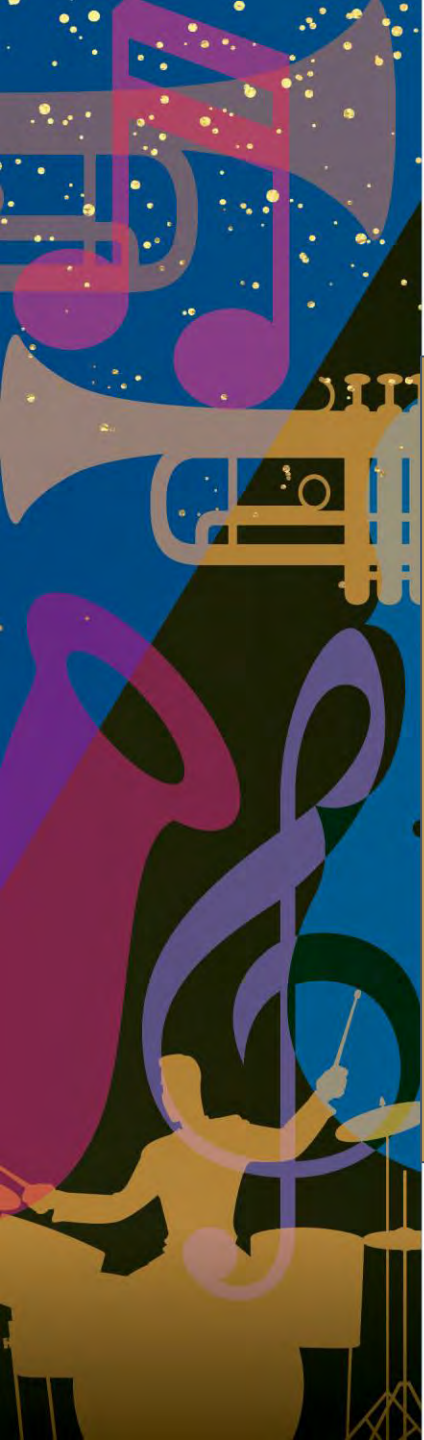
ASSOCIATE  
OF THE YEAR  
HOOMAN AKHTARI,  
ASSOC. AIA





LEADERSHIP IN  
EDUCATION  
DAVID RIFKIND





# GENERAL CONTRACTOR OF THE YEAR

Petulia Schvartz  
TRINTEC CONSTRUCTION



ALLIED MEMBER OF  
THE YEAR  
SOPREMA  
Jeanette Alston- Watkins





CONSULTING  
ENGINEER OF THE  
YEAR  
JAMES D. FERRIS, PE





# LEADERSHIP IN GOVERNMENT

Hon. Audrey Edmonson,  
MDC Commission Chair





**H. SAMUEL KRUSE  
SILVER MEDAL  
ELIZABETH G.  
CAMARGO, AIA**





AIA  
Miami

# 2019 DESIGN AWARDS GALA

DESIGN



FASHION



CULTURE



JAZZ